

[www. daovay. com](http://www.daovay.com)



W J 2

GPS Tracker

深圳市到位科技有限公司  
SHENZHEN DAOVAY TECHNOLOGY CO., LTD

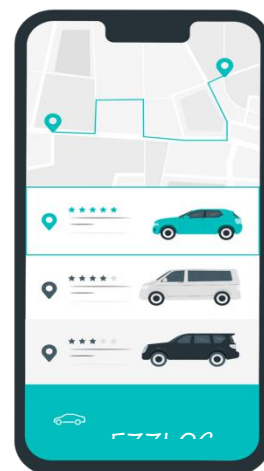
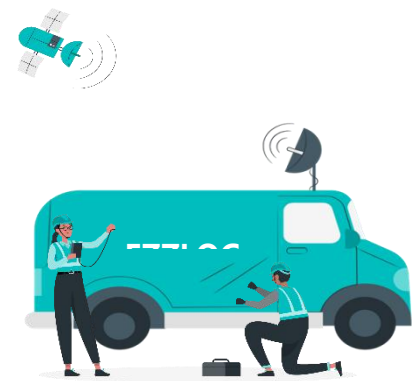
# W J 2

WJ2 GPS tracker adopts 4G full Netcom antenna, which can be connected to 9-100V wide voltage. Compatible with GPS+Beidou+LBS triple positioning. With the EZZLOC platform, it can realize the functions of positioning tracking, track playback, overspeed alarm, entering and exiting electronic fence alarm and other functions.

---

## Product Feature

- A. 4G built-in antenna full Netcom, highly integrated design.
- B. 9-100V wide voltage, real-time positioning tracking, track playback.
- C. Support vibration alarm, overspeed alarm, in and out of electronic fence alarm.
- D. Vehicle ignition and flameout detection.
- E. Easy installation, no need to press the power button, work immediately after power on.
- F. GPS+BeiDou Navigation+LBS triple positioning.



## Product Parameter

| Specification               | Parameter   |
|-----------------------------|---|
| Size                        | 80*35*17mm  |
| Weight                      | 43.2g (Including battery)   |
| Internal Battery            | 150mAH (3.7V)   |
| Operating temperature range | -20°C to +60°C  |
| Storage temperature         | -20°C to +70°C  |
| Frequency Bands             | LTE-FDD:B1/B2/B3/B4/B5/B7/B8/B26/B66<br>GSM/GPRS/EDGE 850/900/1800/1900 MHz             |
| Dynamic output range        | -15~-108dbm   |
| Operating Voltage           | 9V-100V DC  |
| Receiver sensitivity        | -107dbm   |
| Maximum Frequency Error     | ±0.1ppm   |
| Sensitivity                 | Cold start: -145 dbm<br>Warm start: -156 dbm<br>Navigation: -160 dbm<br>Track: -162 dbm |
| Time To First Fix           | Cold start: An average of 32 sec  |
| GSM Antenna                 | Internal only   |
| GPS Antenna                 | Internal only   |
| Transmit Protocol           | TCP   |
| Geo-fence                   | TBD   |
| GPS Data                    | Real-time location update   |
| ShakeAlert                  | Vehicle vibration report in fortified state   |
| LED Indicator               | Power, Indicating status  |

## Application



**Commercial vehicle**



**Motorcycle**



**Transport vehicle**



**Taxi**